



OHENRY SECTIONAL TENT INSTRUCTIONS

Instructions are for both High Peak and Traditional Pole type Tents

INSTRUCTIONS

Please follow these instructions carefully so your new OHenry tent will be installed correctly. The pictures are based on installing a Traditional Pole Type Tent, but also apply to High Peak Tents. High Peak Tents are secured with Ratchet Straps, and the standard Pole Type Tent uses "guy" ropes, but the installation sequence is the same.



Step #1

Set tent sections in a line, in the center of the area where the tent will be installed.



Step #2

Pull bag off the tent as shown.

"Rope Burn" Warning! Be sure the rope that the bag was tied shut with is removed from under the tent section before pulling bag off tent section. **Make sure you do not** pull the bag off the tent section without removing this rope, as this will make a hole in the tent due to abrasion.



Step #3

"Rope Burn" Warning! Untie the tent roll while the tent is still standing on its end. **Make sure you do not** pull the rope out from under the tent roll, as this will make a hole in the tent due to abrasion.



Step #4

Unroll sections in a long line as shown. The end sections will unroll towards where the edge of the narrow side of the tent will be when tent is setup.



Step #5

The tent shown is a sectional 30' x 50' tent, and the line of unrolled sections is app. 50' long.



Step #6

Now unfold one of the end sections like this.



Step #7

Now the tent sections are ready to lace together. Please follow the lacing instructions very carefully.



Step #8

When the tent sections are unfolded, and spread on the ground, the center of the tent where the lace lines and grommet lines meet will look like this, with the end sections facing the middle sections.



Step #9

Be sure the lace lines and grommet lines are laid out flat, and the grommets on the lace side are lined up with the grommets on the grommet side.



Step #10

Beginning in the center area of the tent, insert the first loop on the lace side through the first grommet on the grommet side. Then insert the second loop through the second grommet on the grommet side.



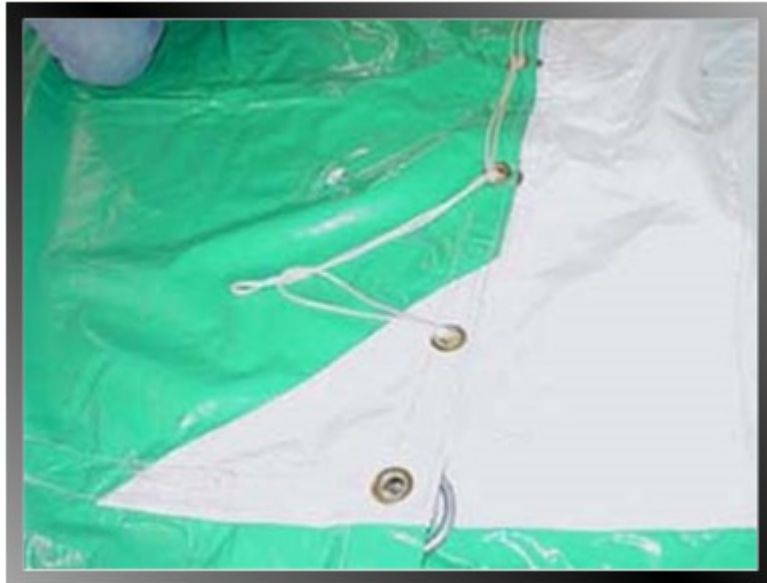
Step #11

Then take the second loop, and return it back through the first loop, and pull it snug, with your pulling motion being towards the eave of the tent. Remember, you lace from the center of the tent, towards the eave of the tent. Continue this process until you reach the end of the lace line.



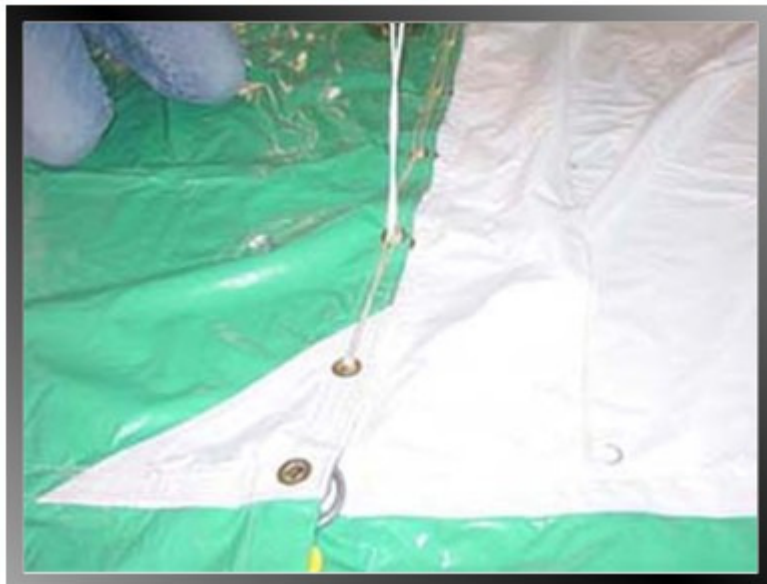
Step #12

Please notice that when you get to the end of the lace line, the second from the last loop on the lace side is longer than all the other loops. This is the loop you will use for the knot.



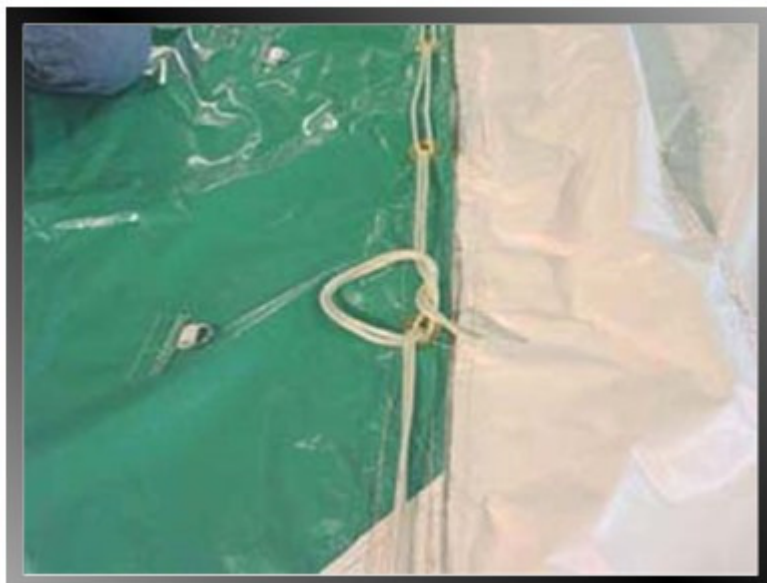
Step #13

Insert the long loop through the last loop on the line as shown.



Step #14

Next pull the long loop back towards the center of the tent as shown.



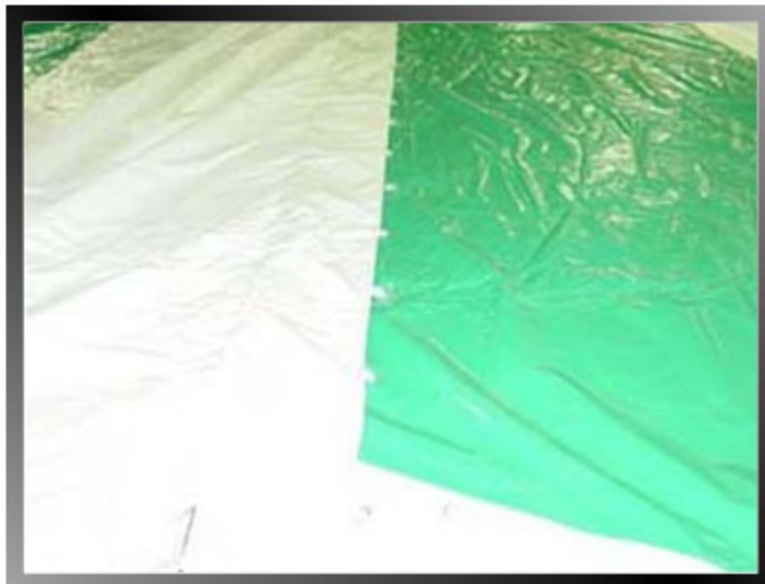
Step #15

Make a knot using the long loop as shown. Tie this knot twice, just to be sure!



Step #16

This shows how the completed lace line should look.



Step #17

Lay the weather flap smoothly over the completed lace line, to prepare the weather flap for the insertion of the weather flap rope.



Step #18

Thread the end of the weather flap rope through the first little ring sewn on the large triangle opposite the tent section that has the weather flap sewn onto it (the lace side).



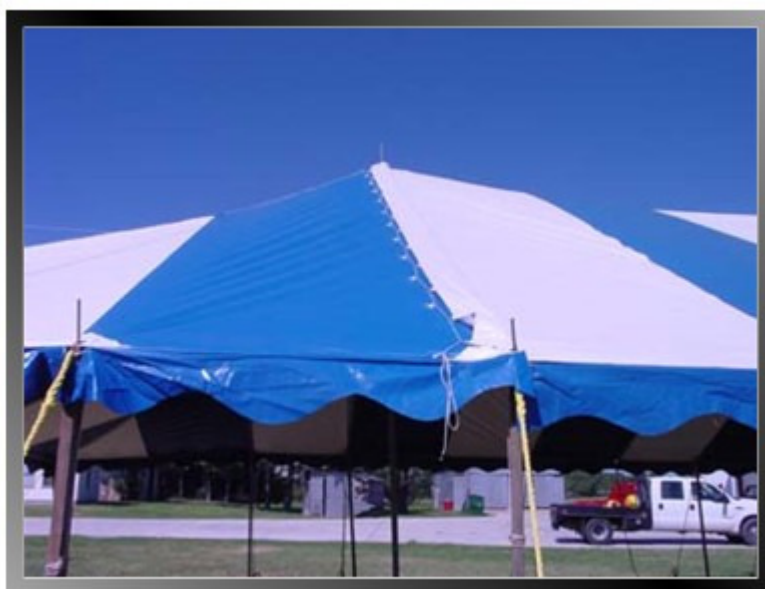
Step #19

Next thread the rope through the second ring sewn on the large triangle, and then through the first ring on the lace side, then the first ring on the grommet side



Step #20

Continue threading rope back and forth from side to side, alternating between the grommet side and the lace side. Tie the end of the weather flap" rope into the last ring at the edge of the tent. Pull excessive slack out and leave slack at the edge of the tent rather than up in the center. You will remove the slack later after you stretch the tent during tightening.



Step #21

This shows how the weather flap rope should zig zag back and forth between the grommet side and the lace side of the sections. Do not pull tight as shown here, that will be done later. Simply pull slack towards edge of tent and tie the end of the rope into the last ring.



Step #22

Stretch all four sides of the tent to remove any slack. Be sure the tent is laid out square.



Step #23

Set two stakes 5' from each corner of tent as shown.



Step #24

Next run a string line from corner stake to corner stake and line up all stakes on each side using the string line as a reference. The tent stakes should be set next to the string line, in line with each brass grommet you see on the edge of the tent.



Step #25

Use a string line on both short and long sides



Step #26

Now it's time to begin erecting the tent! Take a side pole and insert the metal pin into the brass grommet as depicted here.



Step #27

Now raise the side pole and hold it stationary while your helper attaches the tent "guy" rope to the stake using a double half hitch. Refer to next slide for a photo of this knot.



This is photo of the "double half hitch" knot which you should use to attach the "Guy" rope to the tent stake.



Step # 27 (cont.)

As you stand up each side pole, tie of each side pole to the tent top with the small white rope attached to the top, tying it exactly as shown in this picture.



Step #28

Stand up the second corner on the same end of the tent as the first corner you stood up. Now you have both corners of one end of the tent erected as shown.



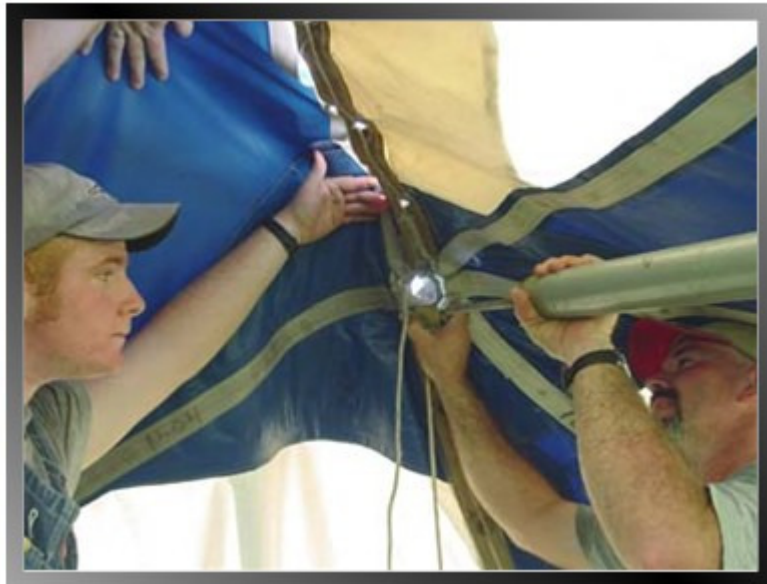
Step #29

Next raise both the corners on the opposite end of the tent. You now have all four corners erected. Go ahead and insert all remaining side poles in the perimeter of the tent and attach the "Guy" ropes. Leave all "Guy" ropes loose (plenty of slack) at this point.



Step #30

Now all the side poles should be standing up and the "guy" ropes should all be attached to their stakes, with plenty of slack still left in "guy" ropes.



Step #31

Time to raise center poles! Insert the pin on the end of the center pole through the brass grommet at the center pole fitting. Tie the center pole "jump rope" to the center pole as shown in the next photo.



Step #32

Secure the long center pole "jump rope" to the center pole using two half hitch knots about 1' below center pole pin.



Step #33

Now push the center pole all the way upright.



Step #34

Secure each center pole "Jump rope" to each center pole as shown.



Step #35

Beginning with the corners, tilt each side pole inwards to give some slack on the "guy" rope. Pull down on the tent edge, and have your helper pull all the slack out of the "guy" rope, and then re-tie the rope securely.



Step #36

Next have your helper push up on the corner of the tent while you back up to the corner pole and use your legs to push pole upright.



Step #37

Continue the previous two steps on each of the short sides of the tent, then the long sides. Tilt each side pole inwards to give some slack on the "guy" rope. Pull down on the tent edge, and have your helper pull all the slack out of the "guy" rope, and then re-tie the rope securely.



Step #38

After taking up all the slack on the "guy" rope, push the side pole (it should be at about a 45-degree angle at this time) upright, using it as a lever to tighten the tent.



Step #39

This photo illustrates how the completed weather flap should appear when tent is erected. You will probably need to untie the rope, pull the rope tight and re-tie it now.



Step #40

Hey! You're nearly finished! All you lack is to tighten the rest of the side poles and their "guy" ropes, then hang the sidewalls! Maybe you should go get a drink, as you are now all hot and tired! Oh yeah... How many sledge hammer handles did you break! FOUR? I won't tell!



Step #41

If you purchased walls for your tent...

Now for side wall! Lay the roll of side wall on the ground between the side poles and the stakes as shown.



Step #42

Now unroll the side wall.



Step #43

Unfold the side wall in a long line between the side poles and the stakes.



Step #44

Beginning with the corner of the side wall which has the snaps, begin hanging the wall on the tent as shown.



Step #45

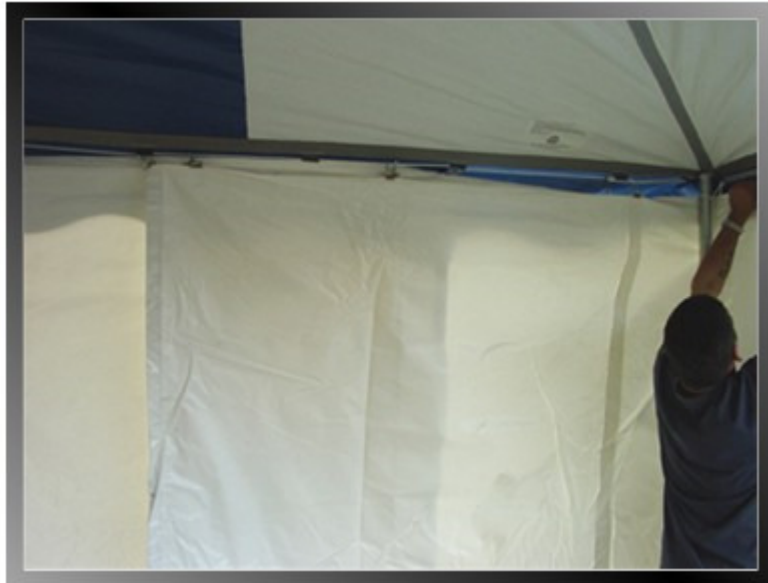
This shows the side wall hanging from the "curtain" rope.



Step #46

Each standard tent which is purchased with side walls includes enough wall to overlap 5' at each end.

(This does not apply if you purchased Velcro walls)



Step #47

This shows how the wall overlaps on the ends. To create a doorway, simply fold each end shown here back on each side and re-hang to create a doorway. You have now completed erecting your Ohenry tent!

